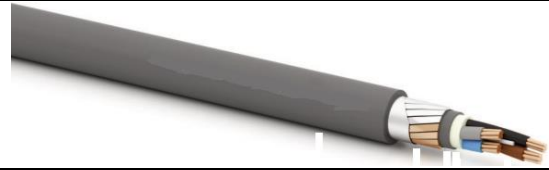




# Becatech

Interconnective Power



## Halogen free power installation cable (Z1G-YMz1Kas B2ca)

### Cable Structure :

Conductor: bare copper according to IEC 60228 (class 2).

Insulation: XLPE.

Inner sheath: halogen free.

Armour: of round of flat galvanized steel wires.

Outer sheath: halogen free.

Available colors: black, brown or grey.

### Technical Specification :

Rated conductor temperature: 90°C.

Rated temperature: -40°C to 70°C.

Rated bending radius: 5-7 x  $\phi$ .

Fire behaviour according to CPR classification B2ca-s1, d1, a1.

### Application :

Suitable for construction directly in the ground and is also suitable for above ground use.  
The outer sheath is resistant to moisture and chemical dust.

Core x mm <sup>2</sup>	Insulation Thickness mm	Outer Sheath Thickness mm	Overall Diameter mm	Weight Cable (kg/km)
2x10	0.7	1.8	20.2	872
3x10	0.7	1.8	21.0	1015
3x16	0.7	1.8	23.0	1277
3x25	0.9	1.8	26.4	2726
3x35	0.9	1.8	28.5	2049
3x50	1.0	1.8	29.1	2256
3x70	1.1	2.0	32.7	3006

Becatech B.V.  
Middenweg 18  
3930 Hamont-Achel

info@becatech.be  
www.becatech.be  
+32 (0)11 19 29 45

IBAN BE89363217265185  
VAT BE0777.903.079  
CoC 0777.903.079



# Becatech

## Interconnective Power

3x95	1.1	2.1	36.1	3906
3x120	1.2	2.2	39.0	4735
3x150	1.4	2.4	43.7	5771
3x185	1.6	2.5	50.3	8049
3x240	1.7	2.7	55.8	10052
4x10	0.7	1.8	22.3	1167
4x16	0.7	1.8	24.5	1485
4x25	0.9	1.8	29.1	2084
4x35	0.9	1.8	30.9	2487
4x50	1.0	1.9	32.9	2865
4x70	1.1	2.1	36.4	3847
4x95	1.1	2.2	40.8	5033
4x120	1.2	2.4	45.0	6155
4x150	1.4	2.5	50.2	7574
4x185	1.6	2.7	56.9	10327
4x240	1.7	2.9	63.6	12921
5x10	0.7	1.8	23.9	1354
5x16	0.7	1.8	26.3	1738
5x25	0.9	1.8	30.4	2354
5x35	0.9	1.9	34.8	3087
5x50	1.0	2.0	39.1	4046
5x70	1.1	2.2	44.9	5454
5x95	1.1	2.4	52.6	8092

Becatech B.V.  
Middenweg 18  
3930 Hamont-Achel

info@becatech.be  
www.becatech.be  
+32 (0)11 19 29 45

IBAN BE89363217265185  
VAT BE0777.903.079  
CoC 0777.903.079